

Class -8th Science

Name - _____

section _____

Q. Which is the most appropriate statement?

- a) Cell wall and membrane perform same function
- b) Membrane controls movement, wall provides support
- c) Cell wall is inside membrane
- d) Membrane is non-living

Q2-Which is the correct classification?

- A. Iron - mixture.
- B. Air - compound.
- C. Water - compound.
- D. Oxygen - mixture

Q3 . Why can mixtures be separated easily?

- A. They are chemically combined
- B. They are physically combined
- C. They are pure substances
- D. They have fixed composition

Q4. Why do solids have fixed shape?

- A. Particles are far apart.
- B. Strong intermolecular forces
- C. No particles.
- D. Weak forces

Q5-. Which statement is correct about elements?

- A. Made of two or more substances.
- B. Cannot be broken into simpler substances
- C. Always mixed.
- D. Easily separated

Q6Why does diffusion occur faster in gases?

- A. Strong forces.
- B. No motion
- C. Particles are far apart and move faster.
- D. Fixed volume

Q7 Which is NOT a mixture?

- A. Air.
- B. Soil.
- C. Milk.
- D. Carbon dioxide

Q8- Which statement is correct?

- A. Compounds are physically combined.
- B. Mixtures have fixed composition
- C. Compounds have fixed composition
- D. Mixtures cannot be separated

Q9-. Why do liquids take the shape of container?

- A. Fixed shape. forces
B. Weak intermolecular forces
C. No particles.
D. Strong

10. Which is the correct statement about air?

- A. It is a compound.
B. It is a mixture of gases.
C. It is an element.
D. It is a solid

11. What allows humans to observe days, months and years?

- A. Periodic cycles of Moon's phases.
B. Various mythological facts and beliefs
C. Presence of various biotic and abiotic factors
D. Movements of the Earth, Sun and Moon

What is the main function of the cell membrane?

- a) To give shape. b) To control entry and exit of substances
c) To produce energy. d) To store food

4. Which of the following is present in plant cells but absent in animal cells?

- a) Nucleus. b) Cytoplasm. c) Cell wall d) Cell membrane

5. Why are cheek cells stained with methylene blue?

- a) To make cell wall visible. b) To see nucleus clearly
c) To increase size of cell. d) To make cytoplasm disappear

Why is safranin used while observing plant cells?

- a) To dry the cells. b) To stain the nucleus and make it visible
c) To kill the cells. d) To dissolve the cell wall

What is the main difference between compounds and mixtures?

- A. Compounds are physically mixed, while mixtures are chemically bonded.
B. Compounds cannot be separated, while mixtures can be physically separated.
C. Mixtures contain only one type of substance.
D. Compounds do not exist in nature

Q. Why air exerts pressure?

- B. Molecules are in random motion and exert force when they collide with surfaces.
- C. All living organisms require air for breathing.
- D. Air supports burning.

Q. Which will happen if plant cell loses its cell wall?

- a) It becomes more rigid.
- b) It becomes like animal cell (flexible)
- c) No change.
- d) It becomes dead immediately

Q. A student says: "Cell wall controls entry and exit of substances." This statement is:

- a) Correct.
- b) Incorrect because membrane does this
- c) Correct for animal cells.
- d) Partially correct

Q. If stain is not added in onion peel experiment, then:

- a) Cell will shrink.
- b) Cell will burst
- c) Structures will not be clearly visible
- d) Cell will die

Q. Give the answer from given figure:-

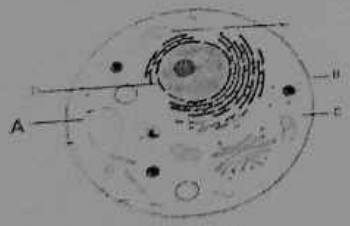


Figure X

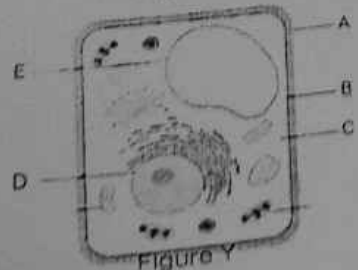


Figure Y

1) Identify the figure X and Y -

2) Label the parts A, B, C and D in figure X

A- _____

B- _____

C- _____

D- _____

3) Label parts A, B, C and D in figure Y

A- _____

B- _____

C- _____

D- _____